



Portable Tracking System

Model No JC-SC- PED21

Jisnu's PED 21 Series constitution of a portable compact solution for field based applications that require high accurate tracking solutions such as Telemetry, UAV and Point to Point RF Communication. Elevations over Azimuth tracking solution delivers high performance even in the most demanding operating conditions. This system is suitable for Antenna sizes of up to 1.2M

The highlights of the system are that the ACU, Tracking Demod and Tracking Receiver are all integrated within the pedestal. The system can be quickly modified to meet customer specified requirements with field proven building blocks. The system tracking is capable upto C-Band depending on the requirements. Monopulse Technique used for auto track to deliver highly accurate tracking of fast flying objects, while maintaining a constant link of the entire test period

Applications

The high accurate tracking capabilities of this system enables user applications such as:

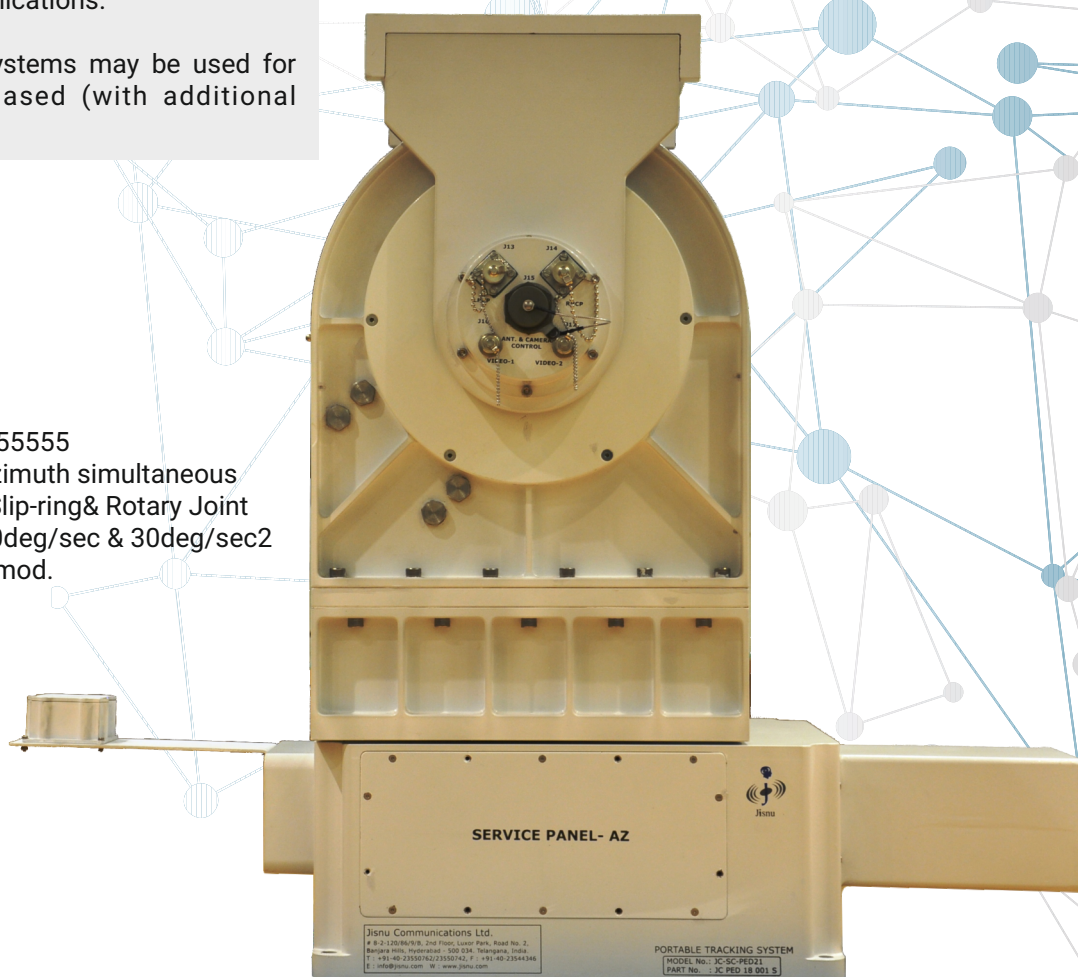
- 1) Object Tracking
- 2) Point to Point RF Communications.
- 3) Telemetry Applications.

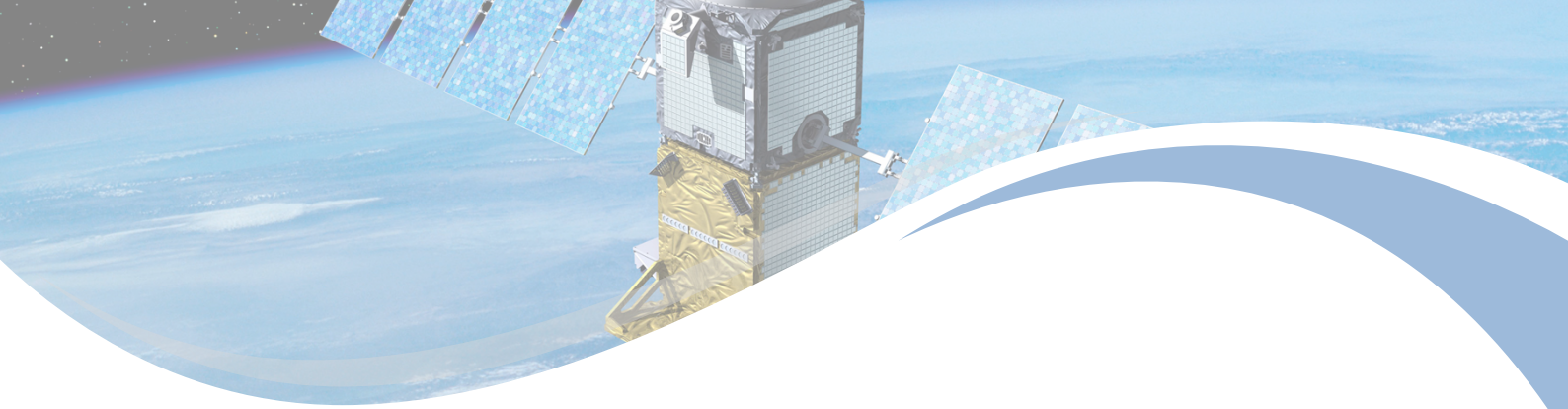
These Portable tracking systems may be used for ground based or Ship-Based (with additional stabilization) applications.



Features

- MIL-STD 461E, IP65 & JSS55555
- Dual axis Elevation Over Azimuth simultaneous
- Azimuth Continuous with Slip-ring & Rotary Joint
- Velocity & Acceleration : 30deg/sec & 30deg/sec2
- Built in ACU & Tracking Demod.
- Compass for True North





Specifications

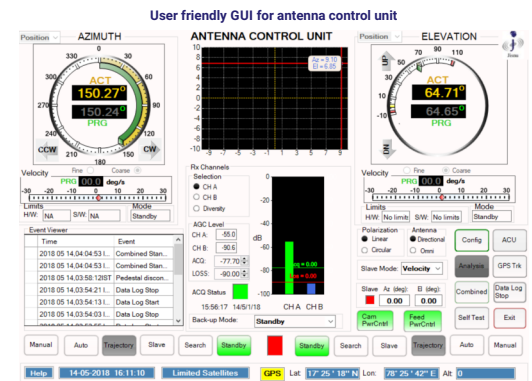
Pedestal Motion Motors	: 2 Axis - Elevation over Azimuth (simultaneous)
Azimuth	: Brush less Servo Motor
• Range	: 360 deg Continuous
• Velocity	: 30 deg/s
• Acceleration	: 30deg/s ²
Elevation	
• Range	: -5 to +95 deg
• Velocity	: 30 deg/s
• Acceleration	: 30 deg /s ²
Limits for Elevation	
• Software	: Programmable within the EL Travel Range.
• Electrical	: - 8 to + 98 deg
• Mechanical	: -10 to + 110 deg
Position Feedback	: Absolute Encoder
Position Resolution	: + / - 0.01 deg
Pointing Accuracy	: + / - 0.1 deg
Built - In Modules	: Motors, Drives, Encoders, Controller, GPS & Tracking Demodulator
Slip Ring	: 42 Channel with two 75 Ohm video interface lines
Rotary Joint	: 2 Channel - up to 4 Ghz
Input / Output	: Std. RF, Control & Power connectors suitable for outdoor applications
Power Supply	: 48 DC & 24V DC through Power Supply
Unit Payload Pedestal	: < 45 Kgs
Weight Dimensions	: < 85 Kgs

Environmental

• Operational Temp.	: - 20 deg C to + 55 deg C
• Storage Temp.	: - 25 deg C to + 60 deg C
• Humidity	: 95% Wind
• Wind - Operational	: < 60 Km/h
• Wind- Survival	: < 90 Km/h
• Rain	: < 100 mm / Hrs

Antenna Control Unit (Built-In)

• Operating Modes	: Standby , Slew Mode, Manual Mode, Point Mode, Slave Mode, GPS Track, Auto Track, Search Mode, Configuration Mode	• Built-in test (BIT)	: Real time Monitoring of Pedestal Parameters, Drives, Compass, Encoders Sensors etc.
• Angle Readout	: 0.01 Deg.	• Data logging	: Logging of user defined data such as Az, EL angles, Time, Mode etc.
• Parameters	: Configurable servo parameters with password protection	• Operating system	: Windows
• System	: Type II servo Loop	• Monitor & Control System	: Standard PC or Laptop with application software loaded
• Limit Indication	: Software & Electrical in EI - UP & DN	• Application Software	: User friendly GUI



Contact Us

Jisnu Communications Ltd.

8-2-120/86/9/B, 2nd Floor, Luxor Park, Road No. 2 Banjara Hills, Hyderabad-500034, Telangana, India

+91-40-2355 0742/62

+91-40-2354 4346

info@jisnu.com www.jisnu.com

For More Info
Scan Here

